


WAKE™ PRO 230

Stability, power and music to tow like a pro.

KEY FEATURES

- Rotax® 1630 ACE™ – 230
- ST3™ Hull
- Tech Package: BRP Audio – Premium System, full color 7.8" wide display and USB port
- iDF – Intelligent Debris-Free Pump System
- iBR® – Intelligent Brake & Reverse
- Watertight phone compartment
- Direct-access front storage
- Boarding ladder
- Wake Package: LinQ® retractable ski pylon, speed-based ski mode, removable wakeboard rack, Wake graphics

CAPACITY

| | |
|--------------------------|-----------------------------------------------------------------------------------|
| Rider Capacity |  |
| Weight Capacity | 600 lb/272 kg |
| Fuel Capacity | 18.5 US gal/70 L |
| Glove Box | 0.8 US gal/2.9 L |
| Front Bin | 25.3 US gal/96 L |
| Storage Capacity – Total | 26.1 US gal/98.9 L |

DIMENSIONS

| | |
|---------------------------|---------------------------|
| Length (bumper to bumper) | 135.8"/345 cm |
| Width | 49.4"/125.5 cm (w/o rack) |
| Height | 44.9"/114 cm |


HULL

| | |
|----------|------------|
| Type | ST3 Hull |
| Material | Fiberglass |

OTHER FEATURES

- Ergolock™ two-piece seat
- Seat strap
- VTS™ – Variable Trim System
- RF D.E.S.S.™ key
- LinQ® attachment system
- Wide-angle mirrors
- Handgrip with palm rest
- Footwell carpets
- Large swim platform
- Tilt steering
- Ski tow eye



 NEW Sand and Dazzling Blue

ROTAX ENGINE 1630 ACE – 230

| | |
|-----------------|----------------------------------------|
| Horsepower | 230 hp |
| Intake System | Supercharged with external intercooler |
| Displacement | 1,630 cc |
| Cooling | Closed-Loop Cooling System (CLCS) |
| Reverse System | Electronic iBR* |
| Fuel Type | 87 octane |
| Throttle System | iTC™ (Intelligent Throttle Control) |
| Exhaust System | D-Sea-Bel™ system |

GAUGE

| | | |
|-------------------|------------------------------------------------------------------------------------------------------------------------------------------------------------------|-----------------------------------------------------------------------------------------------------------------------------------------------------------------------------------|
| Type of Gauge | Large panoramic 7.8" wide LCD display | |
| Main Functions | <ul style="list-style-type: none"> • BRP Connect • Music • Navigation • Bluetooth† connectivity • Speedometer | <ul style="list-style-type: none"> • RPM • VTS • Fuel consumption • Fuel autonomy • Water temperature • Vehicle hours |
| iTC System – Mode | <ul style="list-style-type: none"> • Sport mode • ECO® mode • Slow mode | <ul style="list-style-type: none"> • Speed regulator • Ski mode |

WEIGHT

| | |
|------------|---------------|
| Dry Weight | 836 lb/379 kg |
|------------|---------------|

WARRANTY

BRP limited warranty covers the watercraft for one year.

*Electronic brake, neutral and reverse.

FEATURE HIGHLIGHTS



Tech Package

Levels up entertainment and functionality on the water. It includes a factory-installed, truly waterproof Bluetooth audio system, a 7.8" color display and a USB port.



LinQ Retractable Ski Pylon

A quick-install retractable ski pylon that stows away when not in use. Features spotter handgrips and rope storage.



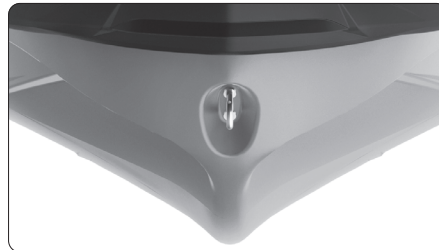
Wakeboard Rack

Provides convenient storage and transport of a wakeboard.¹



Rotax 1630 ACE - 230 Engine

This powerful engine comes standard with a supercharger and external intercooler. It is optimized to run on regular fuel, which lowers fuel costs.



ST3 Hull

An innovative hull that sets the benchmark for rough water handling, stability and offshore performance.



Direct-Access Front Storage

All your gear within arm's reach thanks to a 25.3 US gal (96 L) front storage area, easily accessible from a seated position. Simply raise the handlebars to access essentials for any adventure.²

¹Wakeboard and rope not included. ²Bin organizers are not included.

©2024 Bombardier Recreational Products Inc., (BRP). All rights reserved. ®, TM and the BRP logo are trademarks of Bombardier Recreational Products Inc. or its affiliates. In the USA, products are distributed by BRP US Inc. †All other trademarks are the property of their respective owners. BRP reserves the right to discontinue or change specifications, prices, designs, features, models or equipment without incurring obligation. Some models shown may include optional equipment. Product performance may vary depending on external factors. All competitive comparisons are based on published manufacturer specifications at time of creating this document. The warranty is subject to the exclusions, limitations of liabilities and all other terms and conditions of BRP's standard limited warranty. Read the operator's guide and safety instructions. All models of PWC are meant to be used by drivers of age 16 and older. Observe applicable laws and regulations. Always wear appropriate protective clothing, including a personal flotation device and neoprene shorts. Riding and alcohol/drugs don't mix. Printed in Canada.