

# GTI™ SE 130/170

More convenience and comfort for days of family fun.

## KEY FEATURES

- Rotax® 1630 ACE™ – 130/170
- GTI™ Hull
- Tech Package (optional): BRP Audio – Premium System and iDF – Intelligent Debris-Free System
- iBR® – Intelligent Brake & Reverse
- Variable Trim System (VTS™)
- Slow mode/speed regulator
- Boarding ladder
- Two color options



- NEW Midnight Purple
- Teal Blue and Manta Green

## CAPACITY

Rider Capacity	3
Weight Capacity	600 lb/272 kg
Fuel Capacity	18.5 US gal/70 L
Glove Box	2.3 US gal/8.8 L
Front Bin	38 US gal/144 L
Storage Capacity – Total	40.3 US gal/152.8 L

## DIMENSIONS

Length (bumper to bumper)	130.7"/332 cm
Width	49.2"/125 cm
Height	44.9"/114 cm

## HULL

Type	GTI Hull
Material	Polytec™

## OTHER FEATURES

- Ergolock™ two-piece touring seat
- Seat strap
- RF D.E.S.S.™ key
- Large front storage
- Watertight phone compartment
- LinQ® attachment system
- Wide-angle mirrors
- Handle grips with palm rest
- Footwell carpets
- Large swim platform
- Tow hook

## ROTAX ENGINE

	1630 ACE – 130	1630 ACE – 170
Model	GTI SE 130	GTI SE 170
Horsepower	130 hp	170 hp
Intake System	Naturally aspirated	
Displacement	1,630 cc	
Cooling	Closed-Loop Cooling System (CLCS)	
Reverse System	Electronic iBR*	
Fuel Type	87 octane	
Throttle System	iTC™ (Intelligent Throttle Control)	
Exhaust System	D-Sea-Bel™ system	

## GAUGE

Type of Gauge	4.5" digital display	
Main Functions	• Speedometer • RPM • VTS	• Vehicle hour • Fuel autonomy
iTC System – Mode	• Sport mode • ECO® mode	• Slow mode • Speed regulator

## WEIGHT

Dry Weight	741 lb/336 kg 761 lb/345 kg (w/ sound system)
------------	--

## WARRANTY


BRP limited warranty covers the watercraft for one year.

\*Electronic brake, neutral and reverse.



 **NEW** Midnight Purple



 Teal Blue and Manta Green

## FEATURE HIGHLIGHTS



**BRP Audio – Premium System** (optional)  
A factory-installed, truly waterproof Bluetooth† audio system for an extra dose of fun and entertainment on the water.



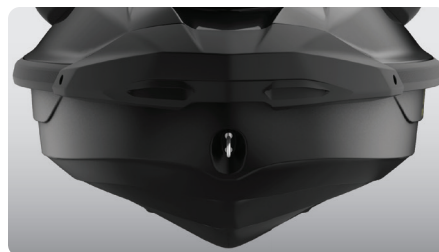
**Swim Platform with Integrated LinQ System**  
Exclusive quick-attach system on a large swim platform that allows for easy installation of accessories.†



**iDF – Intelligent Debris-Free Pump System** (optional)  
An innovative, industry-first system that allows you to free your pump of weeds and debris with intuitive handlebar-activated controls.



**Rotax 1630 ACE – 130/170 Engines**  
Enjoy plenty of pep and great fuel economy with the 1630 ACE – 130 or opt for the 170 hp version, the most powerful naturally aspirated engine in the Sea-Doo® lineup.



**GTI Hull**  
This moderate V-shaped hull guarantees a stable, enjoyable ride in variable water conditions. Confident, predictable handling but incredibly playful when you want it to be.



**Boarding Ladder**  
Makes boarding from the water easier and quicker.

†The cooler is an accessory.

©2024 Bombardier Recreational Products Inc., (BRP). All rights reserved. ®, TM and the BRP logo are trademarks of Bombardier Recreational Products Inc. or its affiliates. In the USA, products are distributed by BRP US Inc. †All other trademarks are the property of their respective owners. BRP reserves the right to discontinue or change specifications, prices, designs, features, models or equipment without incurring obligation. Some models shown may include optional equipment. Product performance may vary depending on external factors. All competitive comparisons are based on published manufacturer specifications at time of creating this document. The warranty is subject to the exclusions, limitations of liabilities and all other terms and conditions of BRP's standard limited warranty. Read the operator's guide and safety instructions. All models of PWC are meant to be used by drivers of age 16 and older. Observe applicable laws and regulations. Always wear appropriate protective clothing, including a personal flotation device and neoprene shorts. Riding and alcohol/drugs don't mix. Printed in Canada.